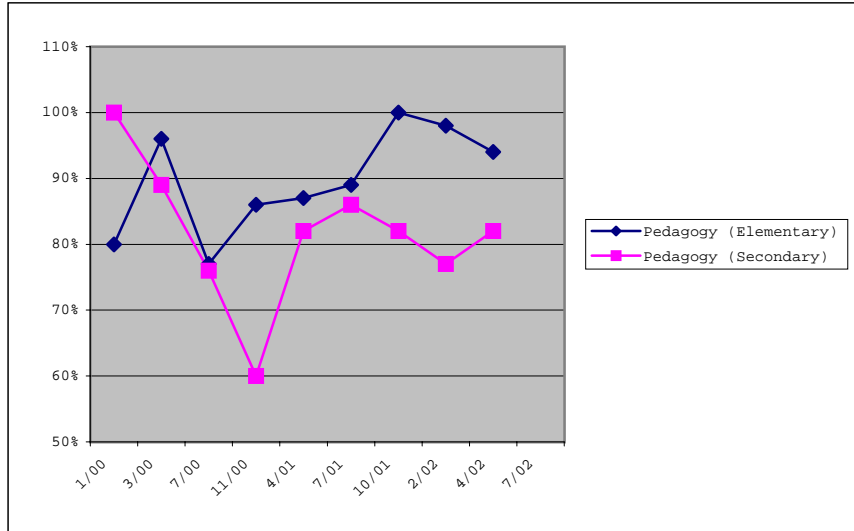


**Summary of Unit Assessment Plan Data Information
 Program Assessment Data Information
 Licensure Testing Results**



Pedagogy
(Elementary)
 Pedagogy
(Secondary)

	1/00	3/00	7/00	11/00	4/01	7/01	10/01	2/02	4/02	7/02
Pedagogy (Elementary)	80%	96%	77%	86%	87%	89%	100%	98%	94%	
Pedagogy (Secondary)	100%	89%	76%	60%	82%	86%	82%	77%	82%	



This data reflects scores by all students taking exams, even those not yet involved in the program. The overall pass rate for program completers in 2000 was 92%, the highest in the state.